



**MEEVER BRACING**

**MEEVER BRACING**

# **BRACING SYSTEM**

ENGINEERING • SHEET PILES • TUBES •  
ANCHORS • BEAMS & TRENCH SHEETS



**WWW.MEEVERBRACING.COM**



# MEEVER BRACING

## MEEVER BRACING



Meever series Brace is a modular system designed & engineered to maintain excavation integrity, it allows flexibility on site and saves time and money. Most importantly it provides a safe working environment.

### **Meever Series is:**

- The first of its kind, with removable hydraulic rams so the load is not under hydraulic load
- Easy to install
- Versatile on site
- Time and money saving
- Easy fast assembly

0.5mtr, 1mtr, 2mtr, 3mtr & 6mtr Modules, Meever Series fits together with a full shear capacity joint, secured with one pin. This simple, easy assembly requires minimal training, saving time on site layout.

### **Reduced Weight**

The brace is lighter than conventional method of steel pipe strutting, therefore smaller machines can be used on site.

### **Over-dig Allowance**

The Meever series hydraulic unit extends up to 700mm, allowing an overall overlap of up to 200mm. This means that if over-digging occurs, the hydraulic unit can extend 200mm to cover the gap between the modules, creating dig flexibility and convenience on site.

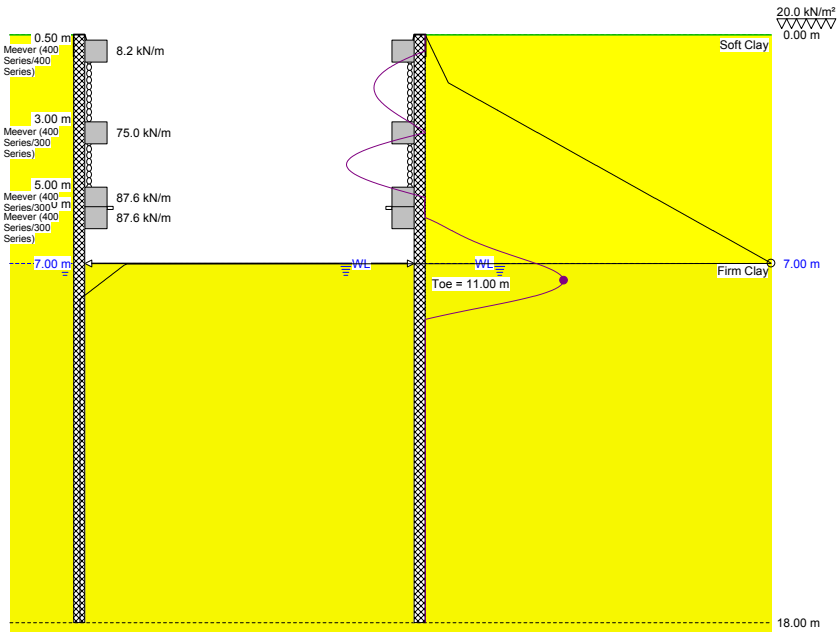
### **Safe Cross Bracing**

Cross brace connections points have been designed into the modules. This allows a positive connection between the module and the cross brace.


[WWW.MEEVERBRACING.COM](http://WWW.MEEVERBRACING.COM)




# MEEVER BRACING

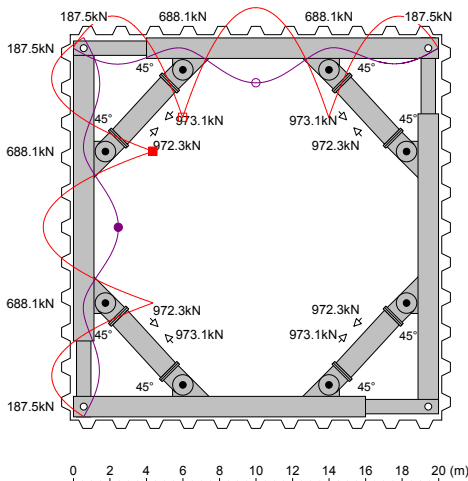


| Maximum                 | d (m) |
|-------------------------|-------|
| 110.0 kN/m <sup>2</sup> | 6.99  |
| 0.3 mm                  | 7.51  |

|   |                               |         |        |         |
|---|-------------------------------|---------|--------|---------|
|  |                               | x (m)   | R (kN) | M (kNm) |
|   | L = 20.00 m                   | 0.00    | 187.5  | 0.0     |
|   | 400 Series:                   | 6.00    | 688.1  | 442.3   |
|   | E = 2.1E+08 kN/m <sup>2</sup> | 14.00   | 688.1  | 442.3   |
|   | I = 60180.0 cm <sup>4</sup>   | 20.00   | 187.5  | 0.0     |
| M <sub>x</sub> = 1504.7 kNm   |                               |         |        |         |
|   |                               | Maximum | x (m)  |         |
| Bending Moment (kNm)  |                               | □       | 442.3  | 5.98    |
| Shear Force (kN)  |                               |         | 351.7  | 5.97    |
| Deflection (mm)   |                               | ○       | 9.0    | 10.00   |

|   |                               |         |        |         |
|---|-------------------------------|---------|--------|---------|
|  |                               | x (m)   | R (kN) | M (kNm) |
|   | B = 20.00 m                   | 0.00    | 187.5  | 0.0     |
|   | 300 Series:                   | 6.00    | 688.1  | 442.3   |
|   | E = 2.1E+08 kN/m <sup>2</sup> | 14.00   | 688.1  | 442.3   |
|   | I = 25170.0 cm <sup>4</sup>   | 20.00   | 187.5  | 0.0     |
| M <sub>x</sub> = 595.0 kNm  |                               |         |        |         |
|   |                               | Maximum |        | x (m)   |
| Bending Moment (kNm)  | ■                             | 442.3   | 5.98   |         |
| Shear Force (kN)  |                               | 351.7   | 5.97   |         |
| Deflection (mm)   | ●                             | 21.4    | 10.00  |         |

- Meever Series Brace can be used in conjunction with all Steel Sheet Piles U & Z Type, trench sheet.
- Meever Series is not restricted to size or shape it can be versatile in every aspect.
- Meever Bracing offer a preliminary design outlining the sheets and the amount of bracing needed to secure your excavations.



## Meever & Meever Head office

Gorinchemsestraat 37  
4231 BE Meerkerk, The Netherlands

T +31 183 358390

E info@meeverbracing.com

[WWW.MEEVERBRACING.COM](http://WWW.MEEVERBRACING.COM)



## OUR OFFICES AND STOCK LOCATIONS



## CONTACT US

Gorinchemsestraat 37  
4231 BE Meerkerk  
The Netherlands

**T** +31 183 358390  
**E** [info@meeeverbracing.com](mailto:info@meeeverbracing.com)



[WWW.MEEVERBRACING.COM](http://WWW.MEEVERBRACING.COM)